



# EnvironmentReady™

ENTERPRISE MANAGED DISASTER RECOVERY

## THE DISASTER RECOVERY CHALLENGE

*“EnvironmentReady™ provides a secondary site, ongoing management, 24 x7 support and a stringent service level agreement around recovery time”*

John Webster,  
Infrastructure Manager,  
Parks Victoria

Organisations have become increasingly more reliant on their data and IT assets. Without access to corporate data files, email and customer information, core business operations grind to a sudden halt. Recovering failed applications & IT environments is complex, requires great human intervention, and often takes weeks to bring the environment back online – if at all. As a result the need for improved Business Continuity and Disaster Recovery processes is at the forefront of every organisation’s strategic goals.

Organisations trying to find a business continuity and disaster recovery solution often have difficulty evaluating all of the criteria associated with a successful deployment. Challenges include choosing and evaluating a replication technology, resource planning and meeting changing data availability requirements.

These challenges often leave necessary Business Continuity and Disaster Recovery plans on the shelf due to limitations of internal IT resources, budget constraints, or the inability to find a suitable solution. Due to these common hurdles, most organisations existing Disaster Recovery plans & Business Continuity strategies fall well short of meeting their optimum recovery objective.

# EnvironmentReady™

ENTERPRISE MANAGED DISASTER RECOVERY



## ENTERPRISE MANAGED DISASTER RECOVERY

Global Storage has vast experience and expertise in understanding today's Business Continuity challenges. As specialists in Backup and Disaster Recovery, we understand the limitations and complexities of protecting data and the considerations required to get it right.

Our EnvironmentReady™ Enterprise Managed Disaster Recovery Service leverages from our expertise in continuous storage replication, virtualisation and the latest de-duplication replication technology to offer customers a better choice when it comes to building a suitable Disaster Recovery capability.

Our managed services approach to business continuity and disaster recovery provides customers with a complete recovery point for their IT environment, independent of hardware constraints.

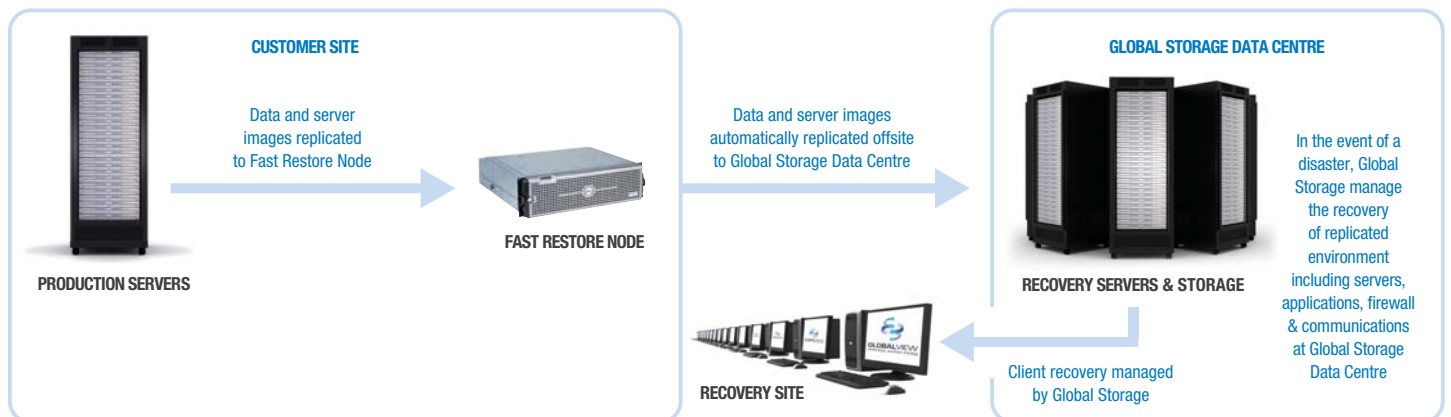
EnvironmentReady™ manages the risks associated with data loss and IT systems downtime, with dedicated resources to manage the recovery process, guaranteed SLAs on recovery times and best practice methodologies and processes.

## HOW ENVIRONMENTREADY™ WORKS

### GLOBAL STORAGE NETWORK OPERATIONS CENTRE



24x7 Management and Monitoring via GlobalView™ Operational Support System



## ENVIRONMENTREADY™ SERVICE

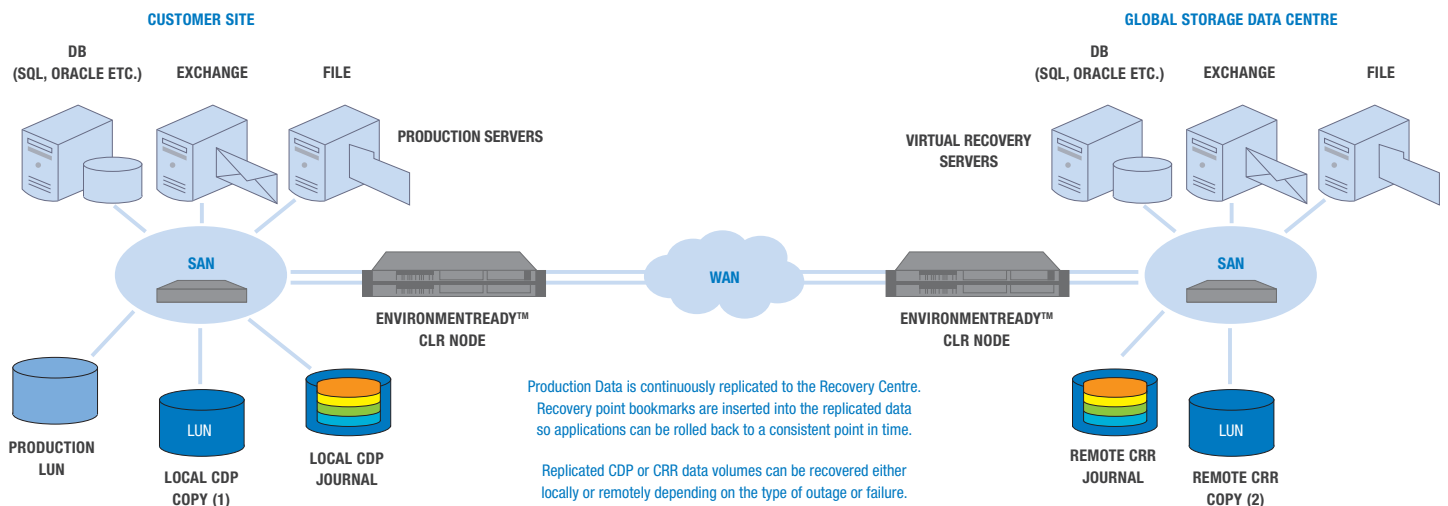
EnvironmentReady™ Enterprise Managed Disaster Recovery leverages our online backup service to deliver fully managed disaster recovery for a simple add on cost per server per month, allowing customers to consolidate and save on their backup and disaster recovery spending. In the event of a disaster, EnvironmentReady™ enables a customer's complete environment, including their servers, applications, firewall and communications to be brought online in our recovery centre.

## ENVIRONMENTREADY™ CLR SERVICE

The EnvironmentReady™ Continuous Local & Remote (CLR) service extends the features of EnvironmentReady™ to provide enhanced recovery times for mission critical application groups. Powered by a combination of local site Continuous Data Protection (CDP) and Continuous Remote Replication (CRR) together with enterprise level data de-duplication, entire server images are captured and continuously replicated to both local storage and additionally remotely to our EnvironmentReady™ recovery centre. In the event of a disaster, EnvironmentReady™ CLR allows the customer to recover locally from a CDP copy or recover remotely from a CRR copy to a point in time just before the disaster took place.



## HOW ENVIRONMENTREADY™ CLR WORKS



## SIMPLIFIED DISASTER RECOVERY TESTING

EnvironmentReady™ simplifies disaster recovery testing and accelerates recovery from a single server failure to a complete primary site outage. All aspects of the disaster recovery testing are managed and regularly carried out by Global Storage, providing peace of mind to organisations that their disaster recovery plan has been fully tested.

## ENHANCED SERVICE LEVEL AGREEMENTS

EnvironmentReady™ provides enhanced Service Level Agreement (SLA) levels to customers over traditional disaster recovery strategies. Global Storage SLAs guarantee that data is being backed up and replicated off-site automatically, and provide an agreed response time following a declared disaster to assist organisations with their data recovery objectives.

## ENVIRONMENTREADY™ MANAGED BACKUP SERVICE KEY BENEFITS:

RISK	COST	EXPERTISE
✓ Complete Disaster Recovery / Business Continuity strategy.	✓ Reduces cost of business disruption and downtime.	✓ Specialised recovery team dedicated to bring your business back online quickly.
✓ Strong SLAs guarantee full systems recovery.	✓ Reduces TCO on Infrastructure, Data Centre costs & IT resources.	✓ Flexible client recovery & testing options using shared virtual recovery environments running VMware.
✓ Enterprise class replication & recovery capabilities.	✓ Reduces CAPEX – Services charged as Capacity On Demand Monthly OPEX payment.	✓ Return Home Solution – ability to move off the DR infrastructure back to your production environment.



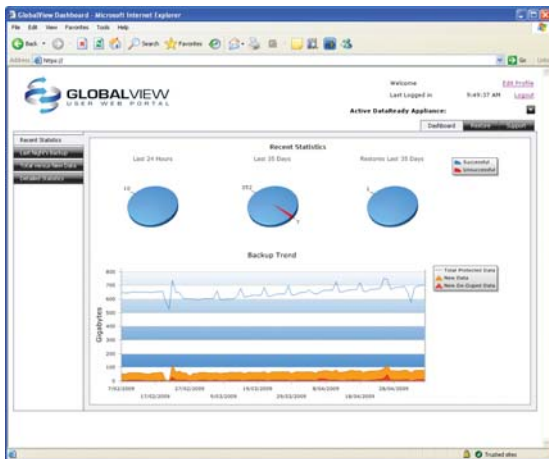
## GLOBALVIEW™

### Improved Management, Visibility, Monitoring & Analysis

Global Storage has invested heavily in developing a monitoring and management system for our managed services. GlobalView™ is a set of web-based applications extending information from our managed services environment. GlobalView™ consists of two components: a front-end User Web Portal and a back-end Operational Support System (OSS).

#### GlobalView™ User Web Portal

The GlobalView™ User Web Portal delivers features such as central service sign-on, customer centric monitoring & reporting, helpdesk integration, and customer administration tools. It provides a consolidated view of job status, success rates and capacity trends.



#### GlobalView™ Operational Support System

The GlobalView™ OSS is monitored and supported by our 24x7 storage operations NOC. The Global Storage NOC is staffed 24x7 to monitor the status, performance, and operations of data protection systems, software and processes to ensure they are functioning properly. The NOC will also provide assistance when required to ensure critical data and systems are rapidly restored in the shortest time possible.

## ENVIRONMENTREADY™ TECHNOLOGY & EXPERTISE

Global Storage uses enterprise class SAN, Server and Virtualisation infrastructure giving customers the reliability and features synonymous with only the most advanced Enterprise environment. Combined with the appropriate communication solution for your organisations needs, users have fast secure access to dedicated recovery servers purposed for the application being used.

Global Storage uses a team of highly skilled engineers to consult, design and implement an EnvironmentReady™ solution to meet your exact needs. Our EnvironmentReady™ development specialists will design a clear road map and adoption strategy for your company and create a comprehensive, actionable solution so you can quickly and cost-effectively restore your critical business operations and bring your business back online.

## ENVIRONMENTREADY™ SECURITY & ENCRYPTION

EnvironmentReady™ Enterprise Managed Disaster Recovery Services combine advanced physical, technological and operational measures to ensure the highest levels of security for our client's data.

Many of the possible security risks associated with the manual handling of data are eliminated in the automated encryption and replication of data to our secure off-site storage facilities. The security measures put in place provide our clients the highest standards in securing their sensitive and valuable data and its access.

### FOR FURTHER INFORMATION CONTACT:

#### Global Storage

**Phone:** 1300 883 825

**Email:** sales@global-storage.com.au

**Web:** www.global-storage.com.au

### OR CONTACT GLOBAL STORAGE PARTNER:

